

4-4 Day 3 Opmizaon: Economics

Learning Targets:

I can use derivaves to opmize quanues in real world situaons.

Oct 30-11:13 AM

Economics

x = The number of items produced and sold

$r(x)$ = The revenue generated from selling x items

$c(x)$ = The cost from making x items

$p(x)$ = The profit from making and selling x items
 $p(x) = r(x) - c(x)$

Oct 30-11:13 AM

Economics

$\frac{dr}{dx}$ = The rate of change of the revenue
 The Marginal Revenue (MR)

$\frac{dc}{dx}$ = The rate of change of the cost
 The Marginal Cost (MC)

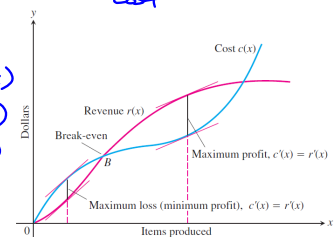
$\frac{dp}{dx}$ = The rate of change of the profit

Oct 30-11:13 AM

Maximum Profit

The maximum profit occurs at a producon level at which the marginal profit equals the marginal revenue.

$p(x) = r(x) - c(x)$
 $p'(x) = r'(x) - c'(x)$
 $0 = r'(x) - c'(x)$
 $c'(x) = r'(x)$



Oct 30-11:13 AM

Ex1. You start a garage band with some of your friends. You record an album using and sell CD's for \$10 each in the lunchroom. The cost of producing x CD's is

$c(x) = .009x^2 + 3.083x + 152.201$
 $r(x) = 10x$

State ordinances allow garage bands to produce at most 500 CD's independently before requiring bands to have a record label. You have not signed a record deal.

$p(x) = 10x - (\quad)$

a.) What producon level will maximize the profits?

What is the profit at this producon level?

$p(x) = 10x - .009x^2 - 3.083x - 152.201$
 $\rightarrow (384, \$1176.82)$ $p' = 10 - .018x - 3.083$
 $(500, \$1056.30)$

Oct 30-11:13 AM

b.) What producon level will minimize your average cost? What is your average cost at this producon level?

$\text{average cost} = \frac{.009x^2 + 3.083x + 152.201}{x}$
 $AC = .009x + 3.083 + \frac{152.201}{x}$
 $AC' = .009 - \frac{152.201}{x^2} = 0$ $\int 500$
 $x = 130.041$ $\$5.42$ $\int \$7.89$
 $= 130 \text{ CD's}$

Hi

Oct 30-12:31 PM

c.) Find the production level at which the average cost equals the marginal cost?

$$\frac{.009x^2 + 3.083x + 152.201}{x} = .018x + 3.083$$

$$.009x^2 + 3.083x + 152.201 = .018x^2 + 3.083x$$

$$152.201 = .009x^2$$

$$x = 130$$

d.) Something special happens at this production level. Make a hypothesis as to what that is.

Oct 30-12:34 PM

Homework

pg 226 # 23-26, 51, 52, 54, 62

Oct 30-11:13 AM